

PHONE: (303)442-1255 • FAX: (303)449-5274 • E-MAIL: itl@itlboulder.com • WEBSITE: www.itlboulder.com

REPORT NUMBER: ITL61186

DATE: 10/31/08

PREPARED FOR: NEXXUS LIGHTING, INC.

PAGE 1

CATALOG NUMBER: SAVI-SHO-W

LUMINAIRE: CAST FINNED METAL BODY, FLAT SPECULAR METAL CIRCUIT BOARD MOUNTING PLATE,
17 CIRCUIT BOARDS EACH WITH ONE LED, ONE OPTICAL ASSEMBLY PER LED CONSISTING
OF: ONE CLEAR CONICAL PLASTIC REFRACTOR WITH PRISMATIC BOTTOM AND RECESSED TOP
AND BOTTOM CENTER, EACH REFRACTOR ENCASED IN MOLDED WHITE PLASTIC FRAME.
MOLDED WHITE PLASTIC REFRACTOR FRAME MOUNTING PLATE, CLEAR FLAT GLASS LENS,
MACHINED BLACK PAINTED METAL LENS FRAME.

LAMP: SEVENTEEN WHITE LIGHT EMITTING DIODES (LEDs) EACH WITH CLEAR HEMISPHERICAL
PLASTIC INTEGRAL LENS, LEDs AIMED AT THE HORIZON.

TOTAL INPUT WATTS = 58.0 AT 120.0 VOLTS

POWER FACTOR = 92.8 %

TEST DISTANCE = 25.25 FEET

NOTE: DATA SHOWN IS ABSOLUTE FOR THE SAMPLE PROVIDED AT RATED INPUT VOLTAGE (120VAC,
60Hz) TO THE LED ASSEMBLY.

FLOODLIGHT CHARACTERISTICS

IES TYPE

4H X 4V

MAXIMUM CANDLEPOWER

4215. AT 0.0 H, 0.5 V

HORIZONTAL BEAM ANGLE (50%)

24.7 deg

AXIAL CANDLEPOWER

VERTICAL BEAM ANGLE (50%)

24.8 deg

HORIZONTAL FIELD ANGLE (10%)

53.6 deg

DEG

HORIZ.

DEG

VERT.

VERTICAL FIELD ANGLE (10%)

53.8 deg

BEAM LUMENS (% FIXTURE)

441. (34.6 %)

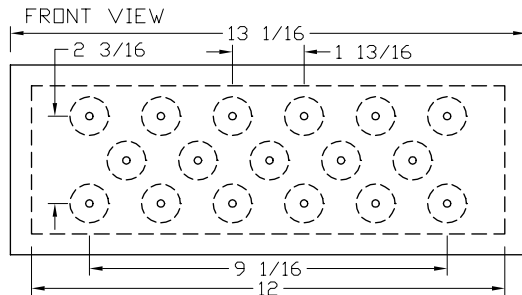
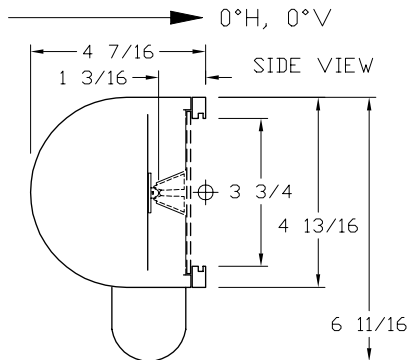
FIELD LUMENS (% FIXTURE)

939. (73.7 %)

TOTAL LUMENS (% FIXTURE)

1274. (100.0 %)

EFFICACY = 21.97 Lm/W

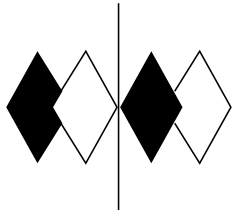


Checked B. HYRE

Approved R. BERGIN

DEG	HORIZ.	DEG	VERT.
90.0	0.	90.0	0.
85.0	0.	85.0	1.
75.0	7.	75.0	9.
65.0	25.	65.0	23.
55.0	45.	55.0	44.
47.5	77.	47.5	75.
42.5	110.	42.5	111.
37.5	160.	37.5	164.
33.0	234.	33.0	243.
29.0	333.	29.0	352.
25.5	473.	25.5	499.
22.5	679.	22.5	696.
19.5	950.	19.5	992.
17.0	1258.	17.0	1321.
15.0	1584.	15.0	1672.
13.0	1968.	13.0	2073.
11.0	2411.	11.0	2530.
9.0	2902.	9.0	3014.
7.0	3367.	7.0	3468.
5.0	3759.	5.0	3854.
3.0	4043.	3.0	4109.
1.0	4183.	1.0	4209.
0.0	4202.	0.0	4202.
-1.0	4183.	-1.0	4166.
-3.0	4043.	-3.0	3993.
-5.0	3759.	-5.0	3668.
-7.0	3367.	-7.0	3244.
-9.0	2902.	-9.0	2785.
-11.0	2411.	-11.0	2308.
-13.0	1968.	-13.0	1874.
-15.0	1584.	-15.0	1499.
-17.0	1258.	-17.0	1192.
-19.5	950.	-19.5	892.
-22.5	679.	-22.5	628.
-25.5	473.	-25.5	456.
-29.0	333.	-29.0	327.
-33.0	234.	-33.0	230.
-37.5	160.	-37.5	156.
-42.5	110.	-42.5	104.
-47.5	77.	-47.5	70.
-55.0	45.	-55.0	41.
-65.0	25.	-65.0	22.
-75.0	7.	-75.0	9.
-85.0	0.	-85.0	1.
-90.0	0.	-90.0	0.

ALL CANDELA AND LUMEN VALUES IN THIS REPORT ARE BASED ON ABSOLUTE PHOTOMETRY.



itl boulder
THE LIGHT CENTER OF THE INDUSTRY SINCE 1955

INDEPENDENT TESTING LABORATORIES, INC.
3386 LONGHORN ROAD, BOULDER, CO 80302 USA

PHONE: (303)442-1255 • FAX: (303)449-5274 • E-MAIL: itl@itlboulder.com • WEBSITE: www.itlboulder.com

REPORT NUMBER: ITL61186
PREPARED FOR: NEXXUS LIGHTING, INC.

DATE: 10/31/08

CANDELA TABULATION

PAGE 2

AVERAGE OF RIGHT AND LEFT SIDES

	0.0	1.0	3.0	5.0	7.0	9.0	11.0	13.0	15.0	17.0	19.5	22.5	25.5	29.0	33.0	37.5	42.5	47.5	55.0	65.0	75.0	85.0	90.0
90.0	0.	0.	0.	0.	0.	0.	0.	0.	0.	0.	0.	0.	0.	0.	0.	0.	0.	0.	0.	0.	0.	0.	0.
85.0	1.	1.	2.	2.	1.	0.	1.	0.	1.	1.	1.	0.	1.	1.	1.	0.	0.	1.	1.	1.	1.	0.	0.
75.0	9.	8.	8.	8.	8.	9.	8.	9.	9.	8.	7.	7.	6.	6.	6.	4.	3.	3.	3.	1.	1.	0.	0.
65.0	23.	22.	22.	22.	23.	23.	22.	23.	23.	22.	22.	21.	20.	19.	17.	16.	15.	12.	9.	4.	2.	0.	0.
55.0	44.	42.	43.	43.	43.	43.	42.	41.	40.	40.	39.	38.	36.	34.	32.	29.	26.	22.	18.	10.	4.	0.	0.
47.5	75.	74.	74.	74.	73.	71.	70.	68.	67.	65.	62.	59.	56.	51.	48.	41.	36.	31.	25.	15.	5.	0.	0.
42.5	111.	109.	109.	107.	106.	103.	101.	97.	95.	91.	86.	80.	75.	67.	60.	53.	45.	37.	29.	19.	7.	0.	0.
37.5	164.	162.	162.	158.	155.	151.	146.	140.	134.	127.	119.	109.	99.	88.	76.	64.	53.	43.	32.	20.	7.	0.	0.
33.0	243.	241.	239.	232.	227.	218.	208.	198.	187.	176.	161.	143.	127.	110.	91.	75.	60.	48.	34.	22.	7.	0.	0.
29.0	352.	350.	345.	334.	323.	309.	291.	275.	254.	235.	211.	183.	158.	134.	109.	88.	67.	53.	36.	22.	7.	0.	0.
25.5	499.	497.	489.	472.	451.	425.	396.	368.	336.	306.	269.	228.	193.	159.	128.	99.	75.	57.	39.	23.	8.	0.	0.
22.5	696.	696.	681.	654.	618.	577.	527.	479.	430.	383.	330.	274.	227.	183.	143.	109.	80.	60.	40.	23.	7.	0.	0.
19.5	992.	988.	964.	921.	862.	794.	713.	631.	554.	482.	405.	329.	267.	211.	161.	120.	87.	64.	42.	25.	9.	0.	0.
17.0	1321.	1318.	1282.	1218.	1133.	1026.	910.	796.	687.	585.	479.	378.	302.	232.	174.	127.	91.	67.	43.	24.	8.	0.	0.
15.0	1672.	1653.	1605.	1520.	1398.	1253.	1099.	951.	810.	682.	549.	421.	329.	249.	185.	133.	95.	69.	44.	25.	8.	0.	0.
13.0	2073.	2065.	1996.	1867.	1709.	1521.	1314.	1121.	946.	787.	622.	466.	357.	266.	194.	138.	98.	70.	44.	24.	7.	0.	0.
11.0	2530.	2521.	2435.	2275.	2059.	1811.	1549.	1306.	1089.	896.	698.	511.	385.	281.	204.	144.	101.	71.	44.	24.	8.	0.	0.
9.0	3014.	2998.	2892.	2689.	2419.	2111.	1786.	1491.	1226.	998.	769.	554.	410.	296.	213.	149.	103.	73.	44.	25.	8.	0.	0.
7.0	3468.	3454.	3318.	3081.	2764.	2395.	2013.	1663.	1355.	1091.	833.	593.	434.	310.	221.	154.	107.	75.	46.	26.	9.	0.	0.
5.0	3854.	3829.	3680.	3416.	3057.	2643.	2204.	1809.	1465.	1170.	885.	624.	451.	321.	227.	156.	108.	75.	45.	25.	7.	0.	0.
3.0	4109.	4089.	3937.	3655.	3270.	2817.	2344.	1916.	1543.	1228.	924.	647.	466.	329.	230.	159.	109.	76.	45.	24.	7.	0.	0.
1.0	4209.	4189.	4046.	3761.	3368.	2903.	2412.	1968.	1585.	1257.	949.	672.	474.	334.	234.	160.	110.	78.	46.	26.	9.	0.	0.
0.0	4202.	4183.	4043.	3759.	3367.	2902.	2411.	1968.	1584.	1258.	950.	679.	473.	333.	234.	160.	110.	77.	45.	25.	7.	0.	0.
-1.0	4166.	4148.	4005.	3723.	3335.	2873.	2390.	1955.	1574.	1251.	942.	663.	471.	332.	234.	160.	110.	77.	45.	25.	8.	0.	0.
-3.0	3993.	3968.	3825.	3552.	3181.	2747.	2290.	1878.	1520.	1210.	916.	640.	462.	327.	231.	158.	109.	77.	46.	25.	8.	0.	0.
-5.0	3668.	3653.	3515.	3262.	2926.	2539.	2125.	1753.	1428.	1145.	871.	615.	447.	319.	227.	157.	108.	76.	46.	26.	9.	0.	0.
-7.0	3244.	3236.	3112.	2896.	2603.	2269.	1914.	1591.	1305.	1058.	811.	579.	426.	307.	219.	153.	106.	74.	46.	25.	8.	0.	0.
-9.0	2785.	2763.	2663.	2482.	2244.	1974.	1675.	1410.	1168.	956.	742.	539.	402.	294.	212.	149.	103.	73.	45.	25.	8.	0.	0.
-11.0	2308.	2293.	2218.	2077.	1889.	1674.	1441.	1241.	1023.	849.	666.	494.	376.	279.	203.	144.	101.	72.	45.	24.	8.	0.	0.
-13.0	1874.	1864.	1804.	1699.	1560.	1391.	1208.	1038.	881.	740.	592.	450.	350.	263.	194.	139.	98.	70.	44.	25.	8.	0.	0.
-15.0	1499.	1491.	1451.	1374.	1269.	1142.	1008.	875.	751.	638.	521.	406.	322.	247.	183.	133.	95.	68.	43.	24.	7.	0.	0.
-17.0	1192.	1185.	1152.	1099.	1023.	931.	828.	729.	634.	546.	455.	364.	295.	229.	173.	127.	92.	66.	41.	24.	7.	0.	0.
-19.5	892.	887.	865.	829.	777.	716.	644.	576.	510.	450.	385.	317.	262.	207.	160.	120.	88.	63.	41.	24.	9.	0.	0.
-22.5	628.	624.	614.	589.	561.	524.	482.	442.	402.	362.	317.	267.	223.	182.	144.	110.	82.	61.	41.	24.	8.	0.	0.
-25.5	456.	454.	446.	432.	413.	392.	366.	344.	318.	292.	260.	223.	190.	158.	127.	100.	76.	57.	39.	23.	8.	0.	0.
-29.0	327.	326.	322.	320.	303.	291.	276.	260.	242.	225.	204.	179.	156.	132.	109.	87.	68.	52.	37.	22.	8.	0.	0.
-33.0	230.	228.	225.	220.	215.	206.	198.	190.	179.	169.	156.	140.	124.	108.	91.	74.	59.	47.	34.	20.	6.	0.	0.
-37.5	156.	155.	154.	151.	149.	144.	140.	135.	129.	124.	117.	107.	98.	87.	75.	64.	52.	43.	32.	20.	7.	0.	0.
-42.5	104.	103.	103.	101.	100.	98.	96.	92.	89.	86.	82.	77.	72.	65.	59.	51.	43.	36.	28.	17.	6.	0.	0.
-47.5	70.	69.	69.	69.	68.	66.	65.	64.	63.	60.	58.	57.	54.	50.	45.	40.	35.	30.	24.	14.	5.	0.	0.
-55.0	41.	40.	40.	41.	41.	41.	40.	39.	38.	38.	37.	36.	34.	32.	31.	29.	25.	22.	17.	10.	4.	0.	0.
-65.0	22.	22.	22.	22.	22.	22.	23.	22.	23.	22.	22.	21.	20.	19.	17.	16.	16.	12.	8.	6.	2.	0.	0.
-75.0	9.	7.	7.	7.	7.	8.	7.	8.	8.	8.	7.	6.	6.	5.	4.	5.	3.	4.	3.	1.	0.	0.	0.
-85.0	1.	0.	0.	1.	1.	0.	0.	0.	0.	0.	0.	0.	0.	0.	0.	0.	0.	0.	0.	0.	0.	0.	0.
-90.0	0.	0.	0.	0.	0.	0.	0.	0.	0.	0.	0.	0.	0.	0.	0.	0.	0.	0.	0.	0.	0.	0.	0.

BEAM EDGE = 2108. CP = 50% OF MAX
FIELD EDGE = 422. CP = 10% OF MAX

THIS REPORT IS BASED ON PUBLISHED INDUSTRY PROCEDURES. FIELD PERFORMANCE MAY DIFFER FROM LABORATORY PERFORMANCE.



INDEPENDENT TESTING LABORATORIES, INC.
3386 LONGHORN ROAD, BOULDER, CO 80302 USA

PHONE: (303)442-1255 • FAX: (303)449-5274 • E-MAIL: itl@itlboulder.com • WEBSITE: www.itlboulder.com

REPORT NUMBER: ITL61186
PREPARED FOR: NEXXUS LIGHTING, INC.

DATE: 10/31/08

CANDELA TABULATION - FIELD ONLY

PAGE 3

AVERAGE OF RIGHT AND LEFT SIDES

	0.0	1.0	3.0	5.0	7.0	9.0	11.0	13.0	15.0	17.0	19.5	22.5	25.5	29.0	33.0	37.5	42.5	47.5	55.0	65.0	75.0	85.0	90.0
90.0																							
85.0																							
75.0																							
65.0																							
55.0																							
47.5																							
42.5																							
37.5																							
33.0																							
29.0																							
25.5	499.	497.	489.	472.	451.	425.																	
22.5	696.	696.	681.	654.	618.	577.	527.	479.	430.														
19.5	992.	988.	964.	921.	862.	794.	713.	631.	554.	482.													
17.0	1321.	1318.	1282.	1218.	1133.	1026.	910.	796.	687.	585.	479.												
15.0	1672.	1653.	1605.	1520.	1398.	1253.	1099.	951.	810.	682.	549.												
13.0	2073.	2065.	1996.	1867.	1709.	1521.	1314.	1121.	946.	787.	622.	466.											
11.0	2530.	2521.	2435.	2275.	2059.	1811.	1549.	1306.	1089.	896.	698.	511.											
9.0	3014.	2998.	2892.	2689.	2419.	2111.	1786.	1491.	1226.	998.	769.	554.											
7.0	3468.	3454.	3318.	3081.	2764.	2395.	2013.	1663.	1355.	1091.	833.	593.	434.										
5.0	3854.	3829.	3680.	3416.	3057.	2643.	2204.	1809.	1465.	1170.	885.	624.	451.										
3.0	4109.	4089.	3937.	3655.	3270.	2817.	2344.	1916.	1543.	1228.	924.	647.	466.										
1.0	4209.	4189.	4046.	3761.	3368.	2903.	2412.	1968.	1585.	1257.	949.	672.	474.										
0.0	4202.	4183.	4043.	3759.	3367.	2902.	2411.	1968.	1584.	1258.	950.	679.	473.										
-1.0	4166.	4148.	4005.	3723.	3335.	2873.	2390.	1955.	1574.	1251.	942.	663.	471.										
-3.0	3993.	3968.	3825.	3552.	3181.	2747.	2290.	1878.	1520.	1210.	916.	640.	462.										
-5.0	3668.	3653.	3515.	3262.	2926.	2539.	2125.	1753.	1428.	1145.	871.	615.	447.										
-7.0	3244.	3236.	3112.	2896.	2603.	2269.	1914.	1591.	1305.	1058.	811.	579.	426.										
-9.0	2785.	2763.	2663.	2482.	2244.	1974.	1675.	1410.	1168.	956.	742.	539.											
-11.0	2308.	2293.	2218.	2077.	1889.	1674.	1441.	1241.	1023.	849.	666.	494.											
-13.0	1874.	1864.	1804.	1699.	1560.	1391.	1208.	1038.	881.	740.	592.	450.											
-15.0	1499.	1491.	1451.	1374.	1269.	1142.	1008.	875.	751.	638.	521.												
-17.0	1192.	1185.	1152.	1099.	1023.	931.	828.	729.	634.	546.	455.												
-19.5	892.	887.	865.	829.	777.	716.	644.	576.	510.	450.													
-22.5	628.	624.	614.	589.	561.	524.	482.	442.															
-25.5	456.	454.	446.	432.																			
-29.0																							
-33.0																							
-37.5																							
-42.5																							
-47.5																							
-55.0																							
-65.0																							
-75.0																							
-85.0																							
-90.0																							

BEAM EDGE = 2108. CP = 50% OF MAX
FIELD EDGE = 422. CP = 10% OF MAX

THIS REPORT IS BASED ON PUBLISHED INDUSTRY PROCEDURES. FIELD PERFORMANCE MAY DIFFER FROM LABORATORY PERFORMANCE.



itl boulder
THE LIGHT CENTER OF THE INDUSTRY SINCE 1955

INDEPENDENT TESTING LABORATORIES, INC.
3386 LONGHORN ROAD, BOULDER, CO 80302 USA

PHONE: (303)442-1255 • FAX: (303)449-5274 • E-MAIL: itl@itlboulder.com • WEBSITE: www.itlboulder.com

REPORT NUMBER: ITL61186
PREPARED FOR: NEXXUS LIGHTING, INC.

DATE: 10/31/08

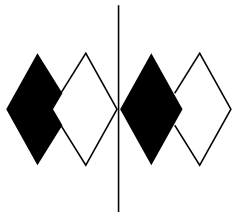
LUMEN TABULATION

PAGE 4

AVERAGE OF RIGHT AND LEFT SIDES

	0	2	4	6	8	10	12	14	16	18	21	24	27	31	35	40	45	50	60	70	80	90	TOTAL
90	0.	0.	0.	0.	0.	0.	0.	0.	0.	0.	0.	0.	0.	0.	0.	0.	0.	0.	0.	0.	0.	0.	0.
80	0.	0.	0.	0.	0.	0.	0.	0.	0.	0.	0.	0.	0.	0.	0.	0.	0.	0.	0.	0.	0.	0.	1.
70	0.	0.	0.	0.	0.	0.	0.	0.	0.	0.	0.	0.	0.	0.	0.	0.	0.	0.	0.	0.	0.	0.	3.
60	0.	0.	0.	0.	0.	0.	0.	0.	0.	0.	0.	0.	0.	0.	0.	0.	0.	0.	0.	0.	0.	0.	5.
50	0.	0.	0.	0.	0.	0.	0.	0.	0.	0.	0.	0.	0.	0.	0.	0.	0.	0.	0.	0.	0.	0.	4.
45	0.	0.	0.	0.	0.	0.	0.	0.	0.	0.	0.	0.	0.	0.	0.	0.	0.	0.	0.	0.	0.	0.	6.
40	0.	0.	0.	0.	0.	0.	0.	0.	0.	1.	0.	0.	0.	0.	0.	0.	0.	0.	0.	0.	0.	0.	8.
35	1.	1.	1.	1.	1.	0.	0.	0.	0.	1.	0.	0.	0.	0.	0.	0.	0.	0.	0.	0.	0.	0.	8.
31	1.	1.	1.	1.	1.	1.	1.	1.	1.	1.	1.	1.	1.	1.	0.	0.	0.	0.	0.	0.	0.	0.	11.
27	1.	1.	1.	1.	1.	1.	1.	1.	1.	1.	1.	0.	1.	0.	0.	0.	0.	0.	0.	0.	0.	0.	10.
24	1.	1.	1.	1.	1.	1.	1.	1.	1.	1.	1.	1.	1.	1.	0.	0.	0.	0.	0.	0.	0.	0.	13.
21	2.	2.	2.	2.	1.	1.	1.	1.	1.	1.	1.	1.	1.	1.	0.	0.	0.	0.	0.	0.	0.	0.	17.
18	2.	2.	1.	1.	1.	1.	1.	1.	1.	1.	1.	0.	0.	0.	0.	0.	0.	0.	0.	0.	0.	0.	14.
16	2.	2.	2.	2.	2.	1.	1.	1.	1.	1.	1.	1.	1.	1.	0.	0.	0.	0.	0.	0.	0.	0.	17.
14	3.	2.	2.	2.	2.	2.	1.	1.	1.	1.	1.	1.	1.	1.	0.	0.	0.	0.	0.	0.	0.	0.	20.
12	3.	3.	3.	2.	2.	2.	2.	1.	1.	1.	1.	1.	1.	1.	0.	0.	0.	0.	0.	0.	0.	0.	24.
10	4.	4.	3.	3.	3.	2.	2.	1.	1.	1.	1.	1.	1.	1.	0.	0.	0.	0.	0.	0.	0.	0.	27.
8	4.	4.	4.	3.	3.	2.	2.	2.	1.	1.	1.	1.	1.	1.	0.	0.	0.	0.	0.	0.	0.	0.	31.
6	5.	4.	4.	4.	3.	3.	2.	2.	1.	2.	1.	1.	1.	1.	0.	0.	0.	0.	0.	0.	0.	0.	34.
4	5.	5.	4.	4.	3.	3.	2.	2.	1.	2.	1.	1.	1.	1.	0.	0.	0.	0.	0.	0.	0.	0.	36.
2	5.	5.	5.	4.	3.	3.	2.	2.	1.	2.	1.	1.	1.	1.	0.	0.	0.	0.	0.	0.	0.	0.	36.
0	5.	5.	5.	4.	3.	3.	2.	2.	1.	2.	1.	1.	1.	1.	0.	0.	0.	0.	0.	0.	0.	0.	36.
-2	5.	5.	4.	4.	3.	3.	2.	2.	1.	2.	1.	1.	1.	1.	0.	0.	0.	0.	0.	0.	0.	0.	35.
-4	4.	4.	4.	4.	3.	3.	2.	2.	1.	2.	1.	1.	1.	1.	0.	0.	0.	0.	0.	0.	0.	0.	32.
-6	4.	4.	4.	3.	3.	2.	2.	2.	1.	1.	1.	1.	1.	1.	0.	0.	0.	0.	0.	0.	0.	0.	29.
-8	3.	3.	3.	3.	2.	2.	2.	1.	1.	1.	1.	1.	1.	1.	0.	0.	0.	0.	0.	0.	0.	0.	26.
-10	3.	3.	3.	2.	2.	2.	1.	1.	1.	1.	1.	1.	1.	1.	0.	0.	0.	0.	0.	0.	0.	0.	22.
-12	2.	2.	2.	2.	2.	1.	1.	1.	1.	1.	1.	1.	1.	1.	0.	0.	0.	0.	0.	0.	0.	0.	19.
-14	2.	2.	2.	2.	1.	1.	1.	1.	1.	1.	1.	1.	1.	1.	0.	0.	0.	0.	0.	0.	0.	0.	16.
-16	1.	1.	1.	1.	1.	1.	1.	1.	1.	1.	1.	0.	0.	0.	0.	0.	0.	0.	0.	0.	0.	0.	13.
-18	2.	2.	2.	1.	1.	1.	1.	1.	1.	1.	1.	1.	1.	1.	0.	0.	0.	0.	0.	0.	0.	0.	16.
-21	1.	1.	1.	1.	1.	1.	1.	1.	1.	1.	1.	1.	1.	1.	0.	0.	0.	0.	0.	0.	0.	0.	13.
-24	1.	1.	1.	1.	1.	1.	1.	1.	1.	1.	1.	0.	1.	0.	0.	0.	0.	0.	0.	0.	0.	0.	10.
-27	1.	1.	1.	1.	1.	1.	1.	1.	1.	1.	1.	1.	1.	1.	0.	0.	0.	0.	0.	0.	0.	0.	10.
-31	1.	1.	1.	1.	0.	0.	0.	0.	0.	1.	0.	0.	0.	0.	0.	0.	0.	0.	0.	0.	0.	0.	8.
-35	0.	0.	0.	0.	0.	0.	0.	0.	0.	0.	1.	0.	0.	0.	0.	0.	0.	0.	0.	0.	0.	0.	7.
-40	0.	0.	0.	0.	0.	0.	0.	0.	0.	0.	0.	0.	0.	0.	0.	0.	0.	0.	0.	0.	0.	0.	5.
-45	0.	0.	0.	0.	0.	0.	0.	0.	0.	0.	0.	0.	0.	0.	0.	0.	0.	0.	0.	0.	0.	0.	4.
-50	0.	0.	0.	0.	0.	0.	0.	0.	0.	0.	0.	0.	0.	0.	0.	0.	0.	0.	0.	0.	0.	0.	5.
-60	0.	0.	0.	0.	0.	0.	0.	0.	0.	0.	0.	0.	0.	0.	0.	0.	0.	0.	0.	0.	0.	0.	3.
-70	0.	0.	0.	0.	0.	0.	0.	0.	0.	0.	0.	0.	0.	0.	0.	0.	0.	0.	0.	0.	0.	0.	1.
-80	0.	0.	0.	0.	0.	0.	0.	0.	0.	0.	0.	0.	0.	0.	0.	0.	0.	0.	0.	0.	0.	0.	0.
-90	75.	73.	68.	62.	55.	47.	40.	34.	28.	34.	26.	20.	20.	15.	13.	9.	7.	8.	3.	1.	0.	0.	637.

LUMEN TOTAL THIS PAGE = 637.



itl boulder
THE LIGHT CENTER OF THE INDUSTRY SINCE 1955

INDEPENDENT TESTING LABORATORIES, INC.
3386 LONGHORN ROAD, BOULDER, CO 80302 USA

PHONE: (303)442-1255 • FAX: (303)449-5274 • E-MAIL: itl@itlboulder.com • WEBSITE: www.itlboulder.com

REPORT NUMBER: ITL61186
PREPARED FOR: NEXXUS LIGHTING, INC.

DATE: 10/31/08

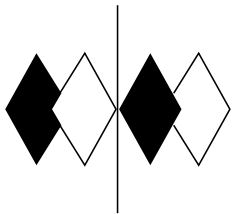
LUMEN TABULATION - FIELD ONLY

PAGE 5

AVERAGE OF RIGHT AND LEFT SIDES

0	2	4	6	8	10	12	14	16	18	21	24	27	31	35	40	45	50	60	70	80	90	TOTAL
90																						0.
80																						0.
70																						0.
60																						0.
50																						0.
45																						0.
40																						0.
35																						0.
31																						0.
27																						0.
24	1.	1.	1.	1.	1.																	4.
21	1.	1.	1.	1.	1.	1.	1.	1.														8.
18	2.	2.	2.	2.	1.	1.	1.	1.	1.													12.
16	2.	2.	1.	1.	1.	1.	1.	1.	1.	1.												12.
14	2.	2.	2.	2.	2.	1.	1.	1.	1.	1.												14.
12	3.	2.	2.	2.	2.	2.	1.	1.	1.	1.	1.											18.
10	3.	3.	3.	2.	2.	2.	2.	1.	1.	1.	1.											21.
8	4.	4.	3.	3.	3.	2.	2.	1.	1.	1.	1.											25.
6	4.	4.	4.	3.	3.	2.	2.	2.	1.	1.	1.	1.										29.
4	5.	4.	4.	4.	3.	3.	2.	2.	1.	2.	1.	1.										31.
2	5.	5.	4.	4.	3.	3.	2.	2.	1.	2.	1.	1.										33.
0	5.	5.	5.	4.	3.	3.	2.	2.	1.	2.	1.	1.										34.
-2	5.	5.	5.	4.	3.	3.	2.	2.	1.	2.	1.	1.										34.
-4	5.	5.	4.	4.	3.	3.	2.	2.	1.	2.	1.	1.										33.
-6	4.	4.	4.	4.	3.	3.	2.	2.	1.	2.	1.	1.										30.
-8	4.	4.	4.	3.	3.	2.	2.	2.	1.	1.	1.	1.										27.
-10	3.	3.	3.	3.	2.	2.	2.	1.	1.	1.	1.	1.										23.
-12	3.	3.	3.	2.	2.	2.	1.	1.	1.	1.	1.	1.										20.
-14	2.	2.	2.	2.	2.	1.	1.	1.	1.	1.	1.	1.										16.
-16	2.	2.	2.	2.	1.	1.	1.	1.	1.	1.	1.											13.
-18	1.	1.	1.	1.	1.	1.	1.	1.	1.	1.												11.
-21	2.	2.	2.	1.	1.	1.	1.	1.	1.													11.
-24	1.	1.	1.	1.	1.	1.	1.															7.
-27	1.	1.	1.																			2.
-31																						0.
-35																						0.
-40																						0.
-45																						0.
-50																						0.
-60																						0.
-70																						0.
-80																						0.
-90																						0.
	69.	67.	62.	56.	49.	41.	34.	27.	22.	23.	14.	6.	0.	0.	0.	0.	0.	0.	0.	0.	0.	469.

LUMEN TOTAL THIS PAGE = 469.



itl boulder
THE LIGHT CENTER OF THE INDUSTRY SINCE 1955

INDEPENDENT TESTING LABORATORIES, INC.
3386 LONGHORN ROAD, BOULDER, CO 80302 USA

PHONE: (303)442-1255 • FAX: (303)449-5274 • E-MAIL: itl@itlboulder.com • WEBSITE: www.itlboulder.com

REPORT NUMBER: ITL61186
PREPARED FOR: NEXXUS LIGHTING, INC.

DATE: 10/31/08

ISOCANDELA CURVES

PAGE 6

AVERAGE OF RIGHT AND LEFT SIDES

