



INDEPENDENT TESTING LABORATORIES, INC.  
3386 LONGHORN ROAD, BOULDER, CO 80302 USA

PHONE: (303)442-1255 • FAX: (303)449-5274 • E-MAIL: [itl@itlboulder.com](mailto:itl@itlboulder.com) • WEBSITE: [www.itlboulder.com](http://www.itlboulder.com)

REPORT NUMBER: ITL61184

DATE: 10/28/08

PREPARED FOR: NEXXUS LIGHTING, INC.

CATALOG NUMBER: SAVI-LINEAR

LUMINAIRE: EXTRUDED SEMI-DIFFUSE METAL HOUSING WITH CAST METAL END CAPS,  
TWO WHITE CIRCUIT BOARDS EACH WITH 18 LEDS, CLEAR FLAT  
PLASTIC LENS.

LAMP: THIRTY-SIX WHITE MULTI-CHIP LIGHT EMITTING DIODES (LEDs),  
VERTICAL BASE-UP POSITION.

TOTAL INPUT WATTS = 12.6 AT 120.0 VOLTS

MOUNTING: SURFACE

POWER FACTOR = 90.1 %

LED DRIVER: HIGH PERFECTION TECH.

LP1060-24-GG-290

NOTE: DATA SHOWN IS ABSOLUTE FOR THE  
SAMPLE PROVIDED AT RATED INPUT  
VOLTAGE (120VAC, 60Hz) TO THE  
LED DRIVER.

TEST PROCEDURE: IESNA LM-79-08

TEST DISTANCE = 25.25 FEET

#### CANDELA DISTRIBUTION

	0.0	22.5	45.0	67.5	90.0
0	208	208	208	208	208
5	208	207	207	207	207
15	202	201	201	200	200
25	190	188	188	188	188
35	171	170	170	170	169
45	146	144	144	144	144
55	114	109	111	111	110
65	73	68	70	69	69
75	29	28	27	27	27
85	2	2	1	1	1
90	0	0	0	0	0

#### FLUX

20
57
87
106
111
99
69
29
3

#### ZONAL LUMEN SUMMARY

ZONE	LUMENS	%FIXT
0- 30	163	28.1
0- 40	270	46.4
0- 60	480	82.6
0- 90	581	100.0
90-180	0	0.0
0-180	581	100.0

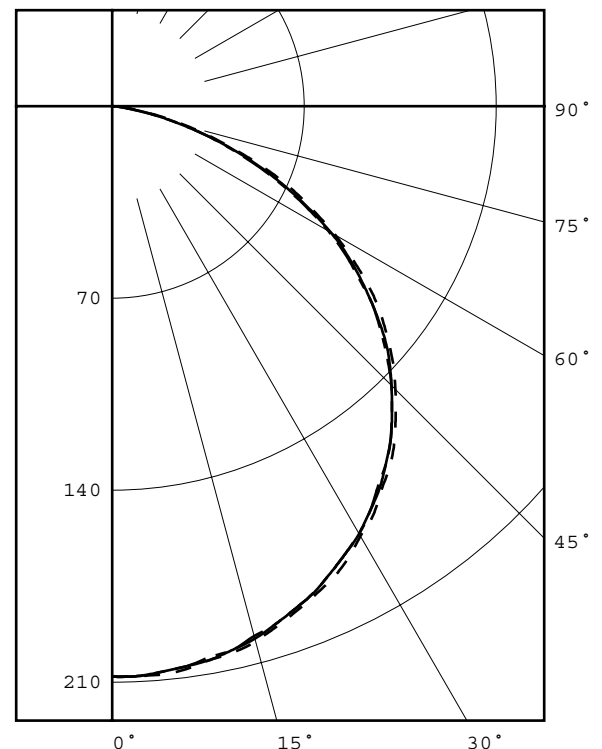
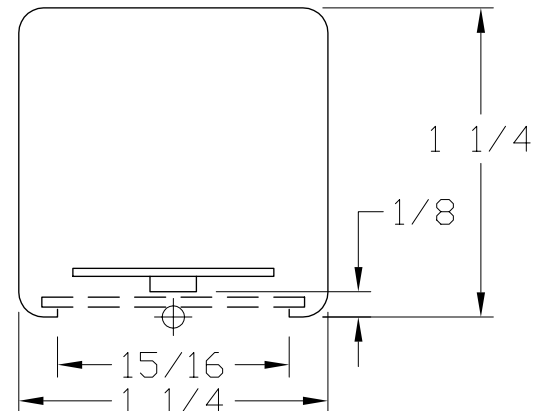
EFFICACY = 46.1 Lm/W

CIE TYPE - DIRECT

PLANE : 0-DEG 90-DEG  
SPACING CRITERIA : 1.3 1.3  
LUMINOUS LENGTH : 0.938 23.188

#### LUMINANCE DATA IN CANDELA/SQ M

ANGLE IN DEG	AVERAGE 0-DEG	AVERAGE 45-DEG	AVERAGE 90-DEG
45	14722.	14521.	14521.
55	14172.	13799.	13675.
65	12316.	11810.	11642.
75	7989.	7438.	7438.
85	1636.	818.	818.

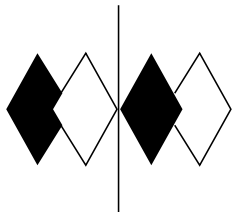


#### LEGEND:

0-deg: - - - - -  
45-deg: = = = = =  
90-deg: - - - - -

Checked B. HYRE

Approved R. BERGIN



**itl boulder**  
THE LIGHT CENTER OF THE INDUSTRY SINCE 1955

INDEPENDENT TESTING LABORATORIES, INC.  
3386 LONGHORN ROAD, BOULDER, CO 80302 USA

PHONE: (303)442-1255 • FAX: (303)449-5274 • E-MAIL: [itl@itlboulder.com](mailto:itl@itlboulder.com) • WEBSITE: [www.itlboulder.com](http://www.itlboulder.com)

REPORT NUMBER: ITL61184  
PREPARED FOR: NEXXUS LIGHTING, INC.

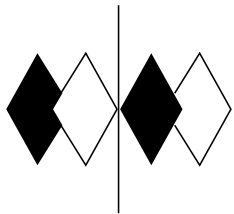
DATE: 10/28/08

CANDELA DISTRIBUTION

	0.0	22.5	45.0	67.5	90.0
0.0	208	208	208	208	208
2.5	208	207	208	207	208
5.0	208	207	207	207	207
7.5	207	206	206	206	206
10.0	205	204	205	204	204
12.5	204	203	203	202	203
15.0	202	201	201	200	200
17.5	199	198	198	198	198
20.0	196	195	195	195	195
22.5	193	192	192	192	192
25.0	190	188	188	188	188
27.5	186	184	184	184	184
30.0	181	180	180	180	180
32.5	177	175	175	175	175
35.0	171	170	170	170	169
37.5	166	164	164	164	164
40.0	160	158	158	158	158
42.5	153	151	151	151	151
45.0	146	144	144	144	144
47.5	139	136	137	137	136
50.0	131	128	129	129	128
52.5	123	119	120	120	120
55.0	114	109	111	111	110
57.5	104	100	102	101	101
60.0	94	89	92	91	91
62.5	83	79	81	80	80
65.0	73	68	70	69	69
67.5	62	58	59	58	58
70.0	50	47	48	47	47
72.5	39	37	37	37	37
75.0	29	28	27	27	27
77.5	20	19	18	18	18
80.0	12	12	11	10	10
82.5	6	6	5	4	4
85.0	2	2	1	1	1
87.5	0	0	0	0	0
90.0	0	0	0	0	0

ZONAL LUMEN SUMMARY

0- 5	5.
5- 10	15.
10- 15	24.
15- 20	33.
20- 25	40.
25- 30	47.
30- 35	52.
35- 40	55.
40- 45	56.
45- 50	55.
50- 55	52.
55- 60	47.
60- 65	39.
65- 70	30.
70- 75	19.
75- 80	10.
80- 85	3.
85- 90	0.



**itl boulder**  
THE LIGHT CENTER OF THE INDUSTRY SINCE 1955

INDEPENDENT TESTING LABORATORIES, INC.  
3386 LONGHORN ROAD, BOULDER, CO 80302 USA

PHONE: (303)442-1255 • FAX: (303)449-5274 • E-MAIL: [itl@itlboulder.com](mailto:itl@itlboulder.com) • WEBSITE: [www.itlboulder.com](http://www.itlboulder.com)

REPORT NUMBER: ITL61184

DATE: 10/28/08

PREPARED FOR: NEXXUS LIGHTING, INC.

COEFFICIENTS OF UTILIZATION - ZONAL CAVITY METHOD

EFFECTIVE FLOOR CAVITY REFLECTANCE 0.20

RC	80				70				50			30			10			0
RW	70	50	30	10	70	50	30	10	50	30	10	50	30	10	50	30	10	0
0	119	119	119	119	116	116	116	116	111	111	111	106	106	106	102	102	102	100
1	110	105	101	98	107	103	99	96	99	96	93	95	92	90	91	89	88	85
2	100	92	86	80	97	90	84	79	87	82	77	83	79	76	80	77	74	72
3	91	81	73	67	89	79	72	66	77	70	65	74	68	64	71	67	63	61
4	84	72	63	57	81	71	63	56	68	61	56	66	60	55	64	58	54	52
5	77	64	55	49	75	63	55	49	61	54	48	59	53	48	57	52	47	45
6	71	58	49	43	69	57	48	42	55	48	42	53	47	42	52	46	41	39
7	66	52	44	38	64	52	43	37	50	43	37	49	42	37	47	41	37	35
8	61	48	39	33	60	47	39	33	46	38	33	44	38	33	43	37	33	31
9	57	44	36	30	56	43	35	30	42	35	30	41	34	30	40	34	30	28
10	54	40	32	27	52	40	32	27	39	32	27	38	31	27	37	31	27	25

ALL CANDELA, LUMENS, LUMINANCE, AND VCP VALUES IN THIS REPORT ARE BASED ON ABSOLUTE PHOTOMETRY. THE COEFFICIENT OF UTILIZATION VALUES ARE BASED ON THE TOTAL ABSOLUTE LUMEN OUTPUT OF THIS LUMINAIRE SAMPLE.