

INSTALLATION INSTRUCTIONS

SAVI NOTE

NICHELESS, COLOR LED LIGHTING

12 VOLT

Must be used with M4
Series Controllers



1.2 AMPS

14 WATTS

MODEL NUMBERS

SAVI-NOTE100, SAVI-NOTE150

NEXXUS™
LIGHTING

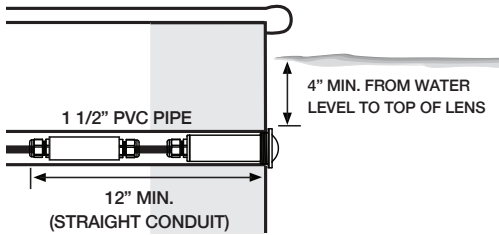
READ AND FOLLOW ALL INSTRUCTIONS CAREFULLY

SAFETY PRECAUTIONS

⚠ CAUTION

1. The SAVI Note is a low voltage LED accessory and should never be electrically connected to any power source other than a Nexus M4 controller. Failure to comply will either damage or destroy the SAVI Note and void the warranty
2. There are no user servicable components in the SAVI Note.

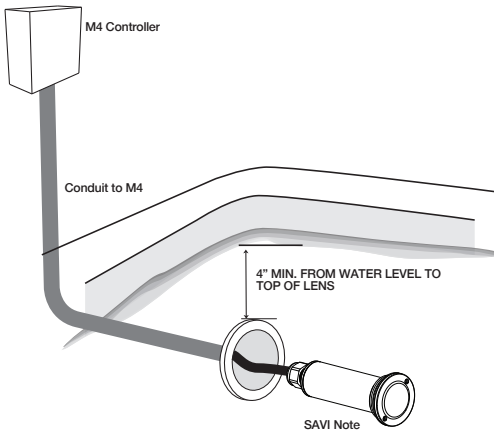
INSTALLATION INSTRUCTIONS



STEP 1

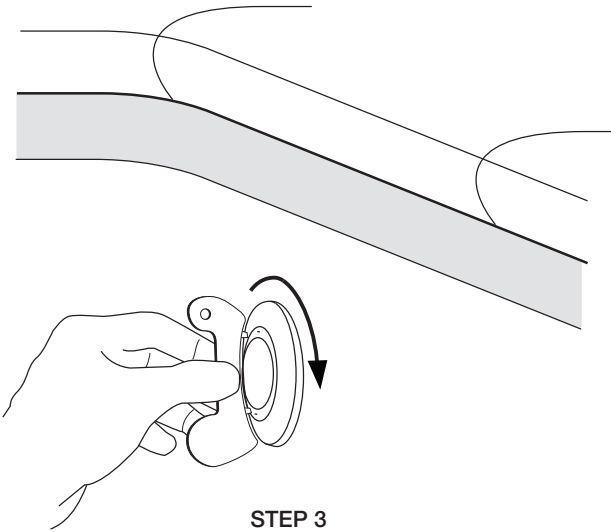
The light fixture must be installed in or on a wall of the pool (or water feature) with the top of the lens opening not less than 4 inches (10.16cm) below the normal water level of the pool except when the fixture is installed in an area of the swimming pool that is not used for swimming and the lens is adequately guarded.

(Note: requires use of 1 1/2" wall fittings)



STEP 2

Snake the 4-conductor electric cord through the conduit outlet of the wall fitting, into the conduit and up to the M4 controller. Cut off extra cord after, allowing for service and length of run to box. Pull the fixture snug to the wall fitting.



STEP 3

Using the lens wrench (part # 13.6151), thread the fixture into the wall fitting until it is snug.

STEP 4

Wire the fixture to the M4 Controller. See the M4 installation manual instructions. No separate ground or bonding wire is required for the Melody (low voltage with no exposed metal) along with not requiring a niche.

STEP 5

Remove the protective cover before startup.



Nexxus Lighting patents pending. This product is covered by one or more of the following patents: 6,971,760. Features officially licensed technology from Color Kinetics; patent numbers 6.016.038, 6.150.774



LIMITED WARRANTY

Nexus Lighting, Inc. warrants its products, excluding lamps, to be free from defects in material and/or workmanship, under normal condition, use and service, for a period of two (2) years from the original invoice date.

TERMS AND CONDITIONS:

This warranty only applies when Nexus Lighting products are properly wired and installed together as a system; and operated within the electrical values shown on the Nexus Lighting specification sheets; used in lighting equipment designed and approved for the application and environmental conditions (temperature, humidity) within the normal specified operating range of the system. This warranty does not apply to any abnormal use in violation of any applicable standard, code or instructions for use in installations including those contained in the latest National Electrical Code (NEC), the Standards for Safety of Underwriters Laboratory, Inc. (UL), Standards for the American National Standards Institute (ANSI), in Canada, the Canadian Standards Association (CSA), Europe (CE), Australia (C-Tick). This warranty will not apply in the event of conditions demonstrating abnormal use or stress, including under/over voltage conditions, excessive switching cycles, excessive operating hours, alterations, accident, theft, misuse, abuse and damaged caused by negligent installation, improper maintenance or where adequate care has not been taken to prevent damage to the lighting system. Replacement of Nexus Lighting components with any other manufacturer will void the entire warranty.

WARRANTY SERVICE CLAIMS:

Nexus Lighting must issue a Return Material Authorization (RMA) number for all requests for warranty review. To expedite service, please contact Nexus Lighting Customer Representative: 407-857-9900. If you are unsure whether a situation exists that is covered by this warranty, please contact Nexus Lighting Customer Service for assistance. In the event of a defect in material or workmanship during the warranty period, Nexus Lighting will repair or replace (at its own discretion) its products under the conditions of the warranty.

RETURN OF DEFECTIVE PRODUCT:

After contacting Nexus Lighting, Inc. and receiving the RMA#, the purchaser / user shall promptly return the product after receiving instructions regarding if, when and where to ship product. Product must be returned within 30 days of receiving RMA#. Shipping box must be clearly marked with RMA#. Failure to follow this procedure shall void this warranty. Nexus Lighting will cover expenses for material but will not cover shipping costs. Products returned without an RMA# will be refused and returned to sender at the sender's expense.

REPLACEMENT OF PRODUCT, LIMITS OF LIABILITY:

The foregoing shall constitute the exclusive remedy of the purchaser and the sole liability of Nexus Lighting, Inc. regarding its products and component warranty. **NO WARRANTY OF MERCHANTABILITY OR FITNESS FOR A PARTICULAR PURPOSE IS MADE OR IS TO BE IMPLIED.** In no event shall Nexus Lighting, Inc. be liable for any other costs or damages including labor charges, lost profits or revenues, incidental, special or consequential damages. Total liability shall not exceed the total extended purchase price for the product. Nexus Lighting, Inc. reserves the right to examine all failed Nexus Lighting, Inc. products and components to determine the cause of failure and patterns of usage and reserves the right to be the sole judge as to whether any product or component is defective and covered under this warranty.

